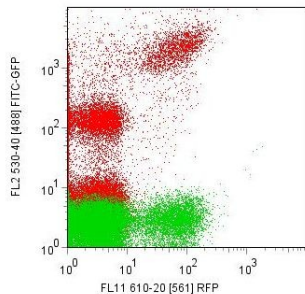


BD INFLUX CELL SORTER

The K.U.Leuven FACS facility operates a state-of-the-art 4-laser BD Influx system with multiple detectors and filters. The system enables most basic and advanced applications for cytometry and cell sorting, including cytometry and cell sorting on common fluorophores (GFP, YFP, CFP, RFP + variants) and cell stains. More information on the website at:
www.biw.kuleuven.be/dtp/cmpg/influx.htm



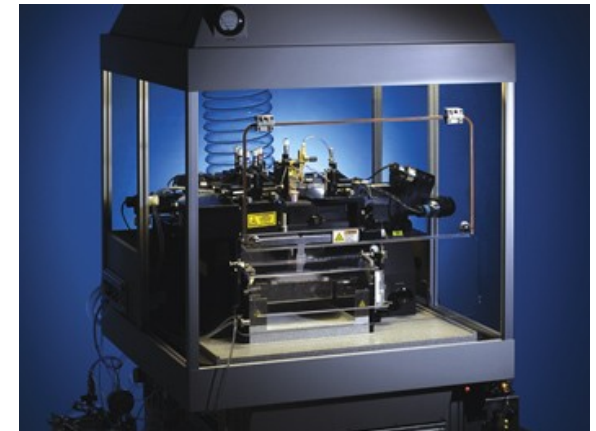
CMPG

The facility is located at the Heverlee Science campus (Landbouwinstituut). Full address is:
Geert Schoofs
Centre of Microbial and Plant Genetics
Katholieke Universiteit Leuven
Faculteit Bio-ingenieurswetenschappen
Kasteelpark Arenberg 20, bus 2460
B-3001 Heverlee
Belgium

Phone: +32 16 32 96 87
Fax: +32 16 32 19 66
E-mail: geert.schoofs@biw.kuleuven.be

KATHOLIEKE UNIVERSITEIT
LEUVEN

K.U.Leuven FACS facility



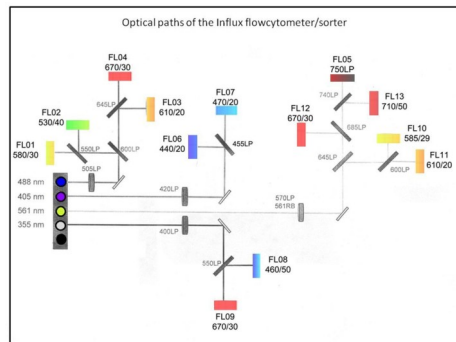
Tel: +32 16 32 16 31
www.cmpg.be

Fluidics

- The sample line including the nozzle assembly can be exchanged, allowing aseptic sorting.
- Sample input: 12x75 mm tubes, polypropylene (provided).
- Sample pressure can be individually adjusted for precise regulation of sample flow.

Optics

Excitation/emission configuration



Laser	Filters
488 nm	530/40 580/30 610/20 670/30
561 nm	610/20 585/29 670/30 710/50 750 LP
405 nm	440/20 470/20
355 nm	460/50 670/30

Electronics

- 16 data acquisition channels, 13 colors plus parallel and perpendicular forward scatter and side scatter.
- Maximum throughput rate of 200,000 events/second.
- 16 x 16 digital compensation matrix.
- Peak width measurement on the trigger parameter is standard.

Sorting

- Up to four-way sorting is possible.
- Sorting containers can be 12x75 mm microtubes, 15-ml, 50-ml tubes; 6-, 24-, 48-, 96-, and 384-well plates; slides; and user-defined collection devices.
- “At 60 psi and 100 kHz with an average threshold rate of 25,000 events per second, a four-way sort achieved a purity of 98% and a yield >80% of Poisson’s expected yield for all four populations.”

Further possibilities

- The BD Influx system can be customized to accommodate specific users. Contact the operator, Geert Schoofs, to discuss the possibilities and costs.
- Possibility to exchange filters. (460/50, 480/40, 520/35, 525/30, 550/50)
- Small particle option: resolution is > 0.2 μm.
- 96-well Autosampler.

Practical arrangements and pricing

- Users should contact Geert Schoofs to discuss their specific project and needs and to make reservations to process their samples.
- The time needed for analyses depends on the specific experiments. As a rule of thumb, the Influx machine can analyze about 10-30 samples per hour for basic cytometry (without sorting), and about 5-15 samples with sorting.
- Analyses can be done on working days from 10h to 12h and from 13h to 17h.
- Cancelling a reservation is possible until 72 hours before start of the experiment. After that, 50% of the reserved time will be charged.
- Users receive their results in a digital format, flow cytometry standard (FCS). These files can be opened and analyzed using several third-party programs.
- Academic users will be charged 90 € (other users 150 €) per hour and 70 € to cover start-up and shut-down cost (fixed cost per day). Operational cost includes the use of the machine, consumables and operator time.

